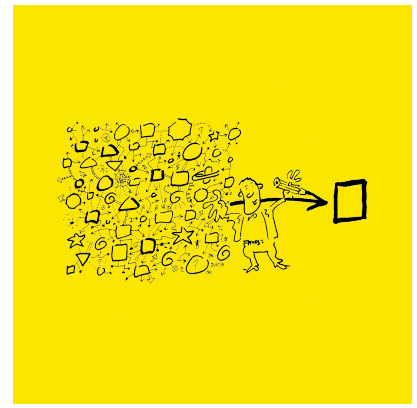


# Query Manager

## Easy SAP HCM and SAP SuccessFactors reporting in real time



The numerous possibilities and functions in the SAP HCM data world can be overwhelming. Have you lost track? With Query Manager for HCM, you can evaluate, format and distribute reports on all SAP HCM data in simple and clear steps, thereby making a decisive impact on the success of your business.

### Easily and quickly generate high-quality reports

---

Despite countless reporting tools and standard evaluations, many reporting requests nowadays are still solved with the customer's own additional programming. Creating last-minute reports during a busy day can overwhelm HR departments. The quality of these reports is also heavily based on personal knowledge, so it's difficult to get to the root of any mistakes.

With Query Manager, you can generate high-quality reports using your SAP HCM and SuccessFactors data in next to no time. With this high-performance reporting solution, you can access critical company data in real time and generate reliable, precise evaluations. As well as the option to create your own reports, this software offers hundreds of predefined reports that you can use as templates for your own reports.

### HCM reports and diagrams - when and where you need them

---

You can use the Query Manager Fiori app to generate and edit reports via your web browser, mobile end device, self-service portals, HR renewal portals or even SAP SuccessFactors Employee Central. The Fiori app lets you create professional-looking diagrams and graphs for further analyses, drill-downs and research. Whether you're setting up an executive dashboard or generating a monthly employee productivity report, you can now visualise your data in the form of compelling diagrams and present your results in a memorable way.

### Highlights

---

- Evaluate all SAP HCM and SAP SuccessFactors data sources
- Generate HR reports in minutes
- Easy to use via drag & drop
- Real-time integration into any analysis tools via OData Generator
- Also available as Microsoft Excel add-in and Fiori app
- Recognised add-on for SuccessFactors Employee Central Payroll
- SAP-certified solution

## Hybrid reporting on SAP on-premise and SAP SuccessFactors data

---

The Query Manager add-on for SAP SuccessFactors integration lets you evaluate data from your on-premise system as well as your SAP SuccessFactors solution at the same time. The data from SAP SuccessFactors is available as a source within Query Manager and can be combined with any other data in SAP or an external system. SAP customers with a hybrid business model can therefore create consolidated reports - in real time and on demand, so no data needs to be duplicated.

## Directly feed data into the analytics tool thanks to the Odata Generator

---

Query Manager can also serve as a real-time data generator for on-premise SAP data, including payroll and attendance, for feeding into and dynamic use within other analytics tools. This is ideal for applications that don't currently have real-time access to this data (SAP Analytics Cloud, SAP SuccessFactors People Analytics, Microsoft BI, Tableau etc.).

## Work with SAP HCM data live in Microsoft Excel

---

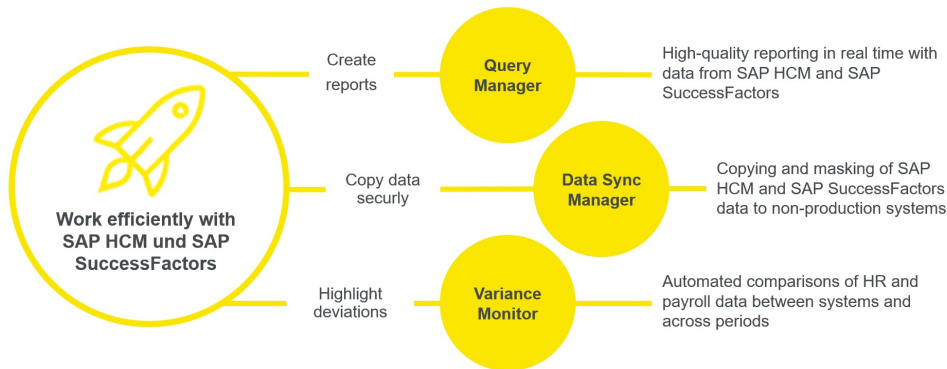
Using the Query Manager Microsoft plug-in, you can update, analyse, approve and present your critical SAP HCM data - all live in Microsoft Excel. After creating an Excel spreadsheet with all the required formatting and formulae, simply click on 'update' to update your spreadsheet with live data from SAP. The Excel function is an add-on of the Query Manager solution that lets you automate your Excel reports. So there's no need to upload and download data between systems or send the latest copies of your data to any recipients.

## Product overview of EPI-USE

---

Discover other EPI-USE products that can help you improve the performance of your SAP HCM and SAP SuccessFactors systems to increase your productivity:

### SOLUTIONS EPI-USE:



### Copy data securely

Data Sync Manager lets you securely copy and mask SAP HCM and SAP SuccessFactors data in non-productive systems for tests, training and support.

#### Data Sync Manager

### Highlight deviations

Use the Variance Monitor to create automated comparisons of HR and payroll data between systems and across different periods.

#### Variance Monitor